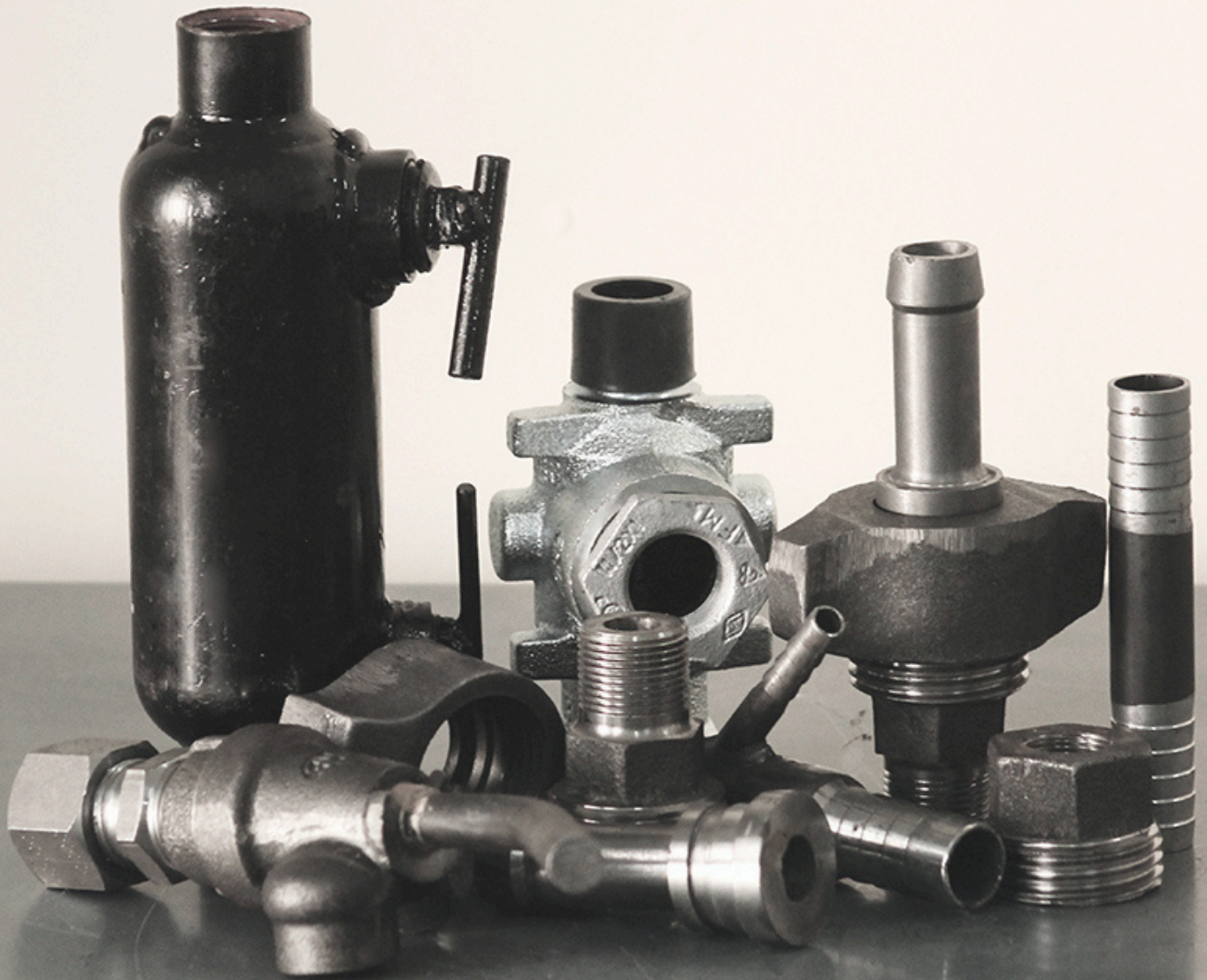




HARDROCK MINING TOOLS

# DRILLING CONSUMABLES



PRODUCT CATALOGUE

# HOSES & FITTINGS

MINING HOSES



WHIPCHECKS



CLAW FITTINGS



HOSE FITTINGS



ANTI STATIC HOSES



MANIFOLDS





# MACHINE SPARES



## AIRLEG SPARES

Spares and accessories for telescopic, retractable and non retractable airlegs



## ROCK DRILL SPARES

Spares and accessories for S215, S25 & MH505 Jackhammers



## DIAMOND DRILLING MACHINE SPARES

Spares and accessories for S36 Drifter, Kempe and Metereater pneumatic diamond drilling machines



# SUPPORT SYSTEMS



## GROUT CAPSULES

- Diameters available 25mm , 28mm ,32mm



## GROUTING GUNS

- Five Models Available (Multi G , Beaver , Vaal Reefs, G1 , BV )
- Barrel Lengths to suit your application( 1m TO 5m)
- Barrels Diameters available 25mm , 28mm ,32mm



## SHEPHERD CROOKS

- Various Sizes
- Made to orde





# PINCH BARS

## ALUMINIUM PINCH BARS

- Designed specifically for Underground barring
- Available in STANDARD DUTY , HEAVY DUTY, EXTRA HEAVY DUTY
- Light weight
- Patented attachment process
- Hardened Chisel point
- Hardened Bent flat
- Available sizes 600m



## STEEL PINCH BARS

- Hex Pinch Bar with rounded, pointed end and a shallow bend for prying and lifting.
- Forged from high-tensile carbon steel for maximum strength.
- Heat-treated ends for maximum toughness.
- Various Sizes available



# MINING CONSUMABLES

ANFO LOADERS



CUPWHEELS



KNOCK OFF TOOLS



BLOW PIPES



GLEN COCK VALVES



GALVANISED FITTINGS





# MINING CONSUMABLES

## DIAMOND DRESSERS



## EAR PLUGS



## SPANNERS



## WRENCHES



## BREAKER STEELS

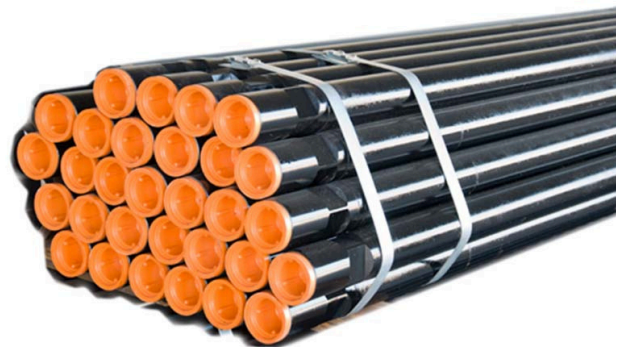
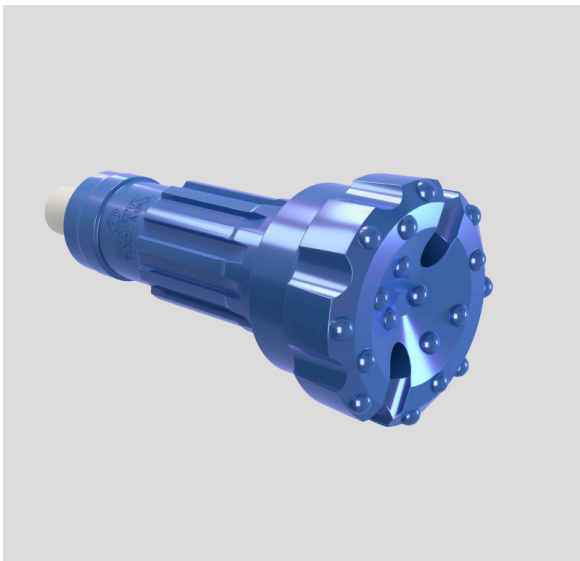


## GRINDING WHEELS



# DTH EQUIPMENT

Down the hole (DTH) hammers, drill rods and bits





# LIGHTING



AREA LIGHTS  
(BATTERY)

2800  
lumens



M18 2800 LUMENS STAND  
LIGHT



RECHARGEABLE CAP  
LAMPS



NECK LIGHT

# DRILLING MUDS

CR 650



LIQUI POL



AUS PLUG



EZEE MIX



GRONE GREASE



AMC CAP 21







Thank You for exploring our collection

**FOR MORE INFORMATION OR TO PLACE AN  
ORDER, CONTACT OUR SALES TEAM:**

**HARARE**

[sales@hardrock.co.zw](mailto:sales@hardrock.co.zw)

+263 719 193 636

**BULAWAYO**

[sales.byo@hardrock.co.zw](mailto:sales.byo@hardrock.co.zw)

+263 719 343 677

[www.hardrock.co.zw](http://www.hardrock.co.zw)